



Malmesbury Road, Bow, E3

BUTLER & STAG



Well presented two bedroom two bathroom townhouse with parking, set within a gated mews development close to Mile End underground station.



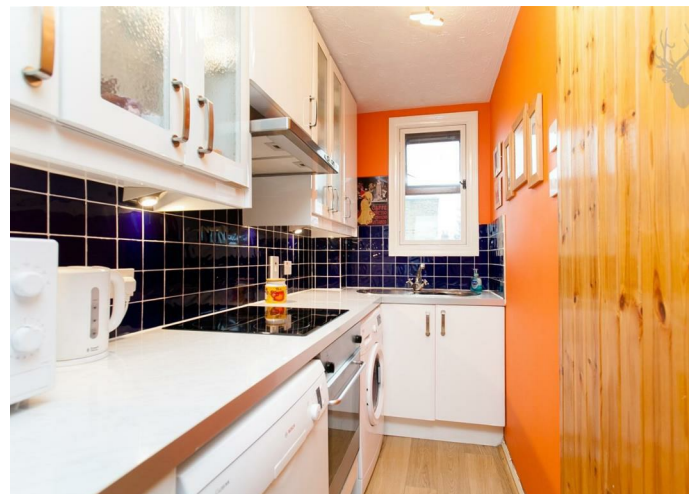
- Two Bedroom Townhouse
- Two Bathrooms
- Off-Street Parking Space
- Furnished
- Secure Gated Development
- Balcony
- Close to Mile End Station
- Available from 15th July 2025

This excellent house is arranged over three floors and comprises of an open-plan kitchen / living space on the middle floor with a double bedroom and en-suite shower room on each of the ground and top floors. The top floor bedroom also enjoys a private balcony with views towards Canary Wharf's iconic skyline.

Situated close to the amenities of Roman Road, the wonderful Victoria Park and some popular gastropubs in the neighbouring roads, the property is also within easy reach of Bow Road and Bow Church stations.

This house would be the perfect home for a couple or two professional sharers, is offered furnished and is available from 15th July 2025.

EPC Rating D
Council Tax Band C





Malmesbury Road

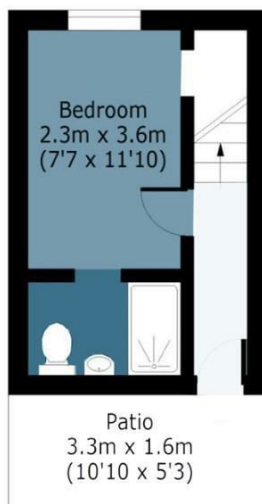
Approx. Gross Internal Area 58.43 Sq M (629 Sq Ft)

BUTLER & STAG



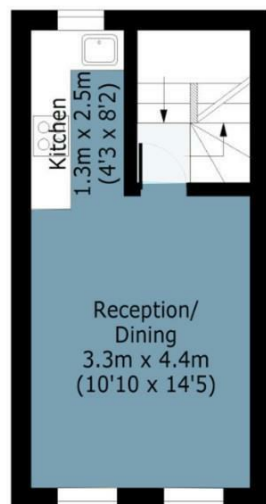
Ground Floor

Approx. 17.19 Sq. meters (185 Sq. feet)



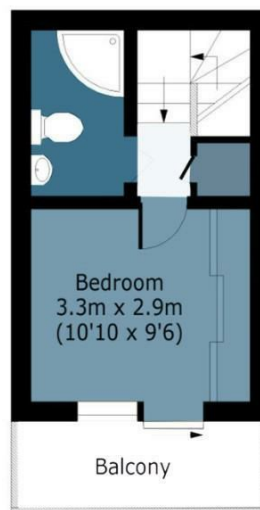
First Floor

Approx. 22.76 Sq. meters (245 Sq. feet)



Second Floor

Approx. 18.49 Sq. meters (199 Sq. feet)



Measurements are approximate and for illustration purposes only. While we do not doubt the accuracy and completeness, we advise you conduct a careful independent assessment of the property to determine monetary value.
© @modephoto.uk www.modephoto.co.uk

IMPORTANT NOTICE - These particulars have been prepared in good faith and they are not intended to constitute part of an offer or contract. We have not performed a structural survey on this property and the services, appliances and specific fittings have not been tested. All photographs, measurements, floor plans and distances referred to are given as a guide and should not be relied upon.

BUTLER & STAG

☎ 020 8102 1236

🏠 508 Roman Road, Bow, London, E3 5LU

✉ bow@butlerandstag.com

www.butlerandstag.uk